



2016

Apostle Islands Station of the Wayzata Yacht Club (AIS) Sailing Instructions (SIs)

Starting Sequence

- Skippers Meeting Will convene approximately 90 minutes prior to first Warning Signal via VHF Radio Channel 72
Course information will be posted on Race Committee (“RC”) Boat prior to start and announced on VHF 72
- First Race See AIS Notice of Race (“NOR”) Addendum #2, “2016 AIS Sailing Schedule”, for schedule of Warning Signals.
Buoy Fleet start will be 5 minutes after MD/JAM start
- Succeeding Races Warning signal for subsequent races during a day will be at discretion of RC, but not less than **15 minutes** after the last boat’s *finish* in the previous race.

1.0 Rules. The races specified in AIS NOR Addendum #2, “2016 AIS Sailing Schedule”, will be governed by the Rules as defined in the Racing Rules of Sailing 2013-2016 (RRS) and the AIS 2016 U.S. Sailing Nearshore Safety Equipment Requirements found at www.wyc.org/ais, except as changed by the AIS NOR or these SIs.

2.0 Entries. Please see AIS NOR for Entries / Eligibility & Insurance Requirements.

3.0 Notice to Competitors. Official notices to competitors will be posted on the Notice Board located at the Dock Office of the Apostle Islands Marina and on-line at Yachtscoring.com

4.0 Changes in Sailing Instructions.

- 4.1** Changes to the SIs will be posted on the notice board and on line at yachtscoring.com two hours prior to the first race of the day and will be announced by RC on VHF Radio Channel 72 prior to the warning signal of a race per RRS Rule 89.2, except as follows:
- 4.1.1** A change to the race schedule will be posted by 2000 on the preceding day before it takes effect except:
- 4.1.1.1** Change of race schedule by adding second race for Mid-Distance (“MD”) and Jib-And-Main (“JAM”) fleets may be announced via VHF Radio Channel 72 on that day’s morning radio call.



- 4.1.2 RC may alter these SIs on-the-water by hail and announcement on VHF Radio Channel 72 after displaying code flag “L” with one sound in the racing area.

5.0 Signals

- 5.1 Signals made ashore will be displayed by RC Boat at Apostle Islands Marina.
 - 5.1.1 When flag AP is displayed ashore, ‘1 minute’ is replaced with not less than 1 hour in the Race Signal AP. This changes RRS Race Signal AP.
 - 5.1.2 Flag “N” over “C” means: All races are abandoned. No more racing today. This changes RRS Race Signal N over A.
- 5.2 Special signals in the racing area:
 - 5.2.1 Flag “N” over “C” means: All races are abandoned. No more racing today. This changes RRS Race Signal N over A.
 - 5.2.2 Flag “S” is the “Shortened Course” Signal.
 - 5.2.2.1 If the RC signals a shortened course (displays flag S without any sound signal) before a start signal, then the time limit for all races for the affected classes has been changed to 2.5 hours from their start signal. No sound signal will be made. Affected classes will be announced via VHF Channel 72
 - 5.2.2.2 If the RC signals a shortened course (displays flag S with two sounds) after the start signal, the finish line for RC-specified classes will be,
 - (a) at a rounding *mark*, between the *mark* and a RC Boat staff displaying flag S; or
 - (b) at any place along the rhumb line of the course, as determined by the RC. This may include a Virtual Mark.The shortened course must be signalled before the first boat crosses the finish line.

Sounds signals may be repeated at the discretion of the RC.

- 5.2.2.3 This changes RRS *Rule* 32.2 and RRS Race Signal ‘S’.

6.0 Schedule of Races

- 6.1 Races are scheduled as shown in AIS NOR Addendum #2, “2016 AIS Sailing Schedule”.
- 6.2 The sailing of subsequent races for Buoy Fleet will be announced by RC on VHF Radio Channel 72.
- 6.3 The sailing of subsequent races for MD/JAM Fleets will be announced via VHF Radio Channel 72 on the days morning radio call.
- 6.4 The schedule of races for Bayfield Race Week will be according to Bayfield Race Week Sailing Instructions.



6.5 Please see AIS NOR Section 5 “Schedule” for additional details including without limitation number of races per day for each fleet.

7.0 Class Flags.

7.1 Class flags must be flown from the backstay.

7.2 Following are the designated class flags:

7.2.1 Buoy Fleet: Yellow

7.2.2 MD Fleet: Green

7.2.3 JAM Fleet: Black

8.0 Racing Areas. Racing may be held anywhere in, near or around the Apostle Islands (including without limitation Madeline Island), except

8.1 “Silver Bay Scramble” will start in or near Apostle Islands and race to Silver Bay, and

8.2 the Saxon Rally race will start in or near Apostle Islands and race to Saxon Harbor and back to Bayfield.

9.0 The Course(s)

9.1 The course will be posted on the display board on RC and will be the official course designation. RC may also announce the course on VHF Radio Channel 72.

9.2 For Buoy Fleet courses (excluding Random Course):

9.2.1 The diagram in illustration “A” attached shows the courses, including the approximate angles between legs, the order in which marks are to be passed, and the side on which each mark is to be left.

9.2.2 Courses will be designated on a display board on RC Boat by letter (e.g., triangle (‘T’), windward/leeward (‘W’) and/or olympic (‘O’) or combination thereof) and number. See Illustration A. If no number follows the letter(s), sail that element (e.g., laps) one time. If a number follows a letter, sail that element of the course that many times.

9.2.3 The approximate compass bearing and distance from the starting line to Mark 1 will be displayed from RC Boat.

9.3 For MD & JAM Fleets courses and Random Course for the Buoy Fleet: The diagram in illustration “B” shows the approximate lat/long and general vicinity of marks that could be used, in addition to temporary mark and/or GPS coordinates, and/or islands as specified by RC. The course for Buoy/MD/JAM fleets will be posted on the display board on RC Boat and will be the official course designation.

10.0 Marks

10.1 Marks may be:

10.1.1 red, orange, white or green spheres;



- 10.1.2 GPS coordinates (i.e., “Virtual Marks”); and/or
- 10.1.3 government navigational marks/buoys.
- 10.2 An offset mark may be used and is a mark of the course to be passed after and on the same side as the windward mark.
- 10.3 Virtual Marks may be set by the RC as part of the initial course, as part of a course change and/or shortening course (including part of finish line). The Virtual Mark will be announced by RC on VHF channel 72 with the Lat/Lon position of the mark and the required rounding side. This modifies RRS 28.1.
- 10.4 All boats will obey all government navigational marks/buoys found along the rumb line while racing, except if the navigation mark/buoy is a mark of the course, when such navigation mark/buoy may be rounded pursuant to RC instructions.

11.0 The Start

- 11.1 Races will be started using the following signals. Times will be taken from the visual signals; the absence or delay of a sound signal will be disregarded.

Signal	Flag	Minutes before starting signal
Warning	Yellow	10
Preparatory	Blue	5
One Minute	Preparatory flag removed	1
Start	Red	0
The preparatory signal for each succeeding class will be made with or after the starting signal of the preceding class.		

This changes RRS Rule 26.

- 11.2 The starting line will be between a staff displaying an orange flag or shape on RC Boat and port end starting mark.
- 11.3 RC may move a starting mark at any time prior to removal of preparatory signal flag. This changes RRS Rule 27.2.
- 11.4 Recalls will be signaled as follows:
 - 11.4.1 When signaling an individual recall, RC may hail (and may announce via radio) the sail number(s) of boat(s) being recalled. Failure or delay to hear or provide announcements will not be grounds for request for redress. This changes RRS Rule 62.1(a).
 - 11.4.2 When at the starting signal RC is unable to identify boats that are on the course side of the starting line or to which RRS Rule 30



applies, or there has been an error in the starting procedure, RC may signal a general recall by displaying the First Substitute with two sounds. A recalled Class will always go to the end of the starting order and start 5 minutes after the last Class started. “First Substitute” will be flown for approximately 2 minutes after the start signal. This changes RRS Rule 29.2.

- 11.5** Any boat using a borrowed sail with an alternate sail number will report the proper sail number to RC Boat both prior to *starting* and after *finishing* each race where such borrowed sail is used.

12.0 Cancellation

- 12.1** In addition to RRS Rule 27.3, races will be cancelled or postponed when the 5-minute mean wind speed exceeds 24 knots or wind gusts exceed 30 knots, as determined by RC Principal Race Officer (“PRO”). If these conditions exist 90 minutes before the scheduled warning signal, signals will be made ashore. If these conditions develop less than 90 minutes prior to the scheduled warning signal start, signals will be made by RC Boat.
- 12.2** Should the 5-minute mean wind speed exceed 20 knots but not 24 knots RC PRO will change the course to a Random course determined by the PRO (with input by RC Chair at PRO’s discretion).

13.0 Change of Course After the Start

- 13.1** A change of course after the start will be signaled before the leading boat has begun the leg, although the new mark may not be in position. Any mark to be rounded after rounding the new mark may be relocated to maintain the original course configuration.
- 13.2** RC will announce change of course via VHF radio channel 72 but will not display the minus (-) sign or the plus (+) sign described in RRS Rule 33. This changes RRS Rule 33.

14.0 The Finish

- 14.1** Unless otherwise specified by RC, finish line will be between a staff displaying an orange flag on a RC Boat and the course side of the mark closest to RC Boat.
- 14.2** Prior to the last leg of the course, RC may substitute the Bayfield City Dock or Bayfield Fishing Dock as the finish line for all fleets.
- 14.3** RC may shorten a race at any time using a Virtual Mark and virtual finish line by announcing on VHF Channel 72 the following:
- 14.3.1** RC will announce the Lat/Lon of the mark;
- 14.3.2** RC will announce the side (e.g., port or starboard) of the mark to pass;
and
- 14.3.3** RC will announce the compass bearing of the line.



The virtual finish line will extend 200 feet on the given bearing from the lat/lon specified by the RC. Boats shall take GPS time of their *finish*. This item modifies RRS 32.1 and RRS 34.

14.4 Finish lines at Bayfield City Dock and Bayfield Fishing Dock will be as follows:

14.4.1 Bayfield City Dock Finish Line: When Bayfield City Dock is used as one mark of the finish line, the other end will be a mark approximately 200 feet from the end of the pier in a line projected by extending Rittenhouse Avenue through the end of the pier. In the absence of a second mark in the water, all boats will *finish* within approximately 200 feet of the pier along the line specified above.

14.4.2 Bayfield Fishing Dock Finish Line: When Bayfield Fishing Dock is used as one mark of the finish line, the other end will be a mark approximately 200 feet from the end of the pier, and in a line perpendicular to the dock. In absence of a second mark in the water, all boats will *finish* approximately 200 feet off the dock along the line specified above.

14.4.3 All boats should be prepared to take their own GPS times in the event a timekeeper is not available. Record the boat finishing ahead and behind you if known

15.0 Time Limits

15.1 Buoy Fleet: For Buoy Fleet (except Dobson Cup and Hulings Around Madeline Race), time limit for races will be 3 hours from the starting signal. Any boat not *finishing* a race within 3 hours from the starting signal will be scored TLE.

15.2 MD and JAM Fleets:

15.2.1 There will be no time limit for the MD and JAM Fleet courses. RC will be ‘on station’ (either on-the-water, at the finish line or ashore) for 4 hours from the *starting* signal taking finishing places. Any boat *finishing* after 4 hours must self-report their GPS *finishing* time to RC or MD/JAM Liaison within 1 hour of *finishing*.

15.2.2 All boats retiring from a race at any time must inform RC and will be scored DNF.

15.2.3 All boats continuing to race after sunset will use every reasonable effort to report (via VHF Radio Channel 72) their GPS position on an hourly basis to other MD/JAM boats continuing to race and the MD/JAM liaison.

15.3 All Fleets: There is no time limit for the Dobson Cup, Hulings Around Madeline, Silver Bay Scramble & Saxon Rally, race.

15.4 Failure for any boat to meet time limit(s) will not be grounds for redress. This changes RRS Rule 62.1(a).

16.0 Protests



- 16.1 A boat intending to protest will, as soon as possible after *finishing* or retiring, inform the finish line RC Boat of her intent to protest and the sail number(s) of the boat(s) being protested. If RC Boat is not ‘on station’ at the finish line, then the boat must inform RC within 1 hour of their *finishing*. This changes Rule 61.1(a). Except in cases where damage or medical emergency forces a boat to retire or RC Boat is not on station at the finish line, a protest is invalid when this requirement is not met..
 - 16.2 Protests must be delivered to RC PRO or AIS Fleet Captain.
 - 16.3 Time limit for filing protests and requests for redress will be **one (1) hour** after a boat’s *finish*.
 - 16.4 Notices will be posted as soon as reasonably possible of receiving the the protest/request for redress to inform competitors of hearings in which they are parties or named as witnesses. Where reasonably possible, hearings will be scheduled for the day the protests were received and in the order the protests were received. In unusual circumstances and with sufficient notice, the Protest Committee (‘PC’) may schedule a hearing for a different day, time or order.
 - 16.5 Notices of hearings will be posted on the Notice Board located at the Dock Office of the Apostle Islands Marina and on-line at wyc.org/ais.
 - 16.6 Postponement of a hearing by a party: a party to a protest may request postponement of a hearing for any reason by contacting the PC. PC may grant additional request(s) for postponement of hearing by a party only with good reason. RRS Rule 63.3(b) is changed by adding this SI #16.6.
 - 16.7 Ratings Protest: In furtherance of RRS Rule 64.3, all class rules questions will be referred to LMPHRF (or one design authority, if one design class rules are at issue).
 - 16.8 Breaches of SI #11.5 will not be grounds for a protest by a boat. This changes RRS Rule 60.1(a). Violation of this SI may be subject to a lesser penalty, or no penalty, at discretion of the PC. This changes RRS Rule 64.1.
 - 16.9 Statements made by RC (via hail or announcements via VHF Radio Channel) may be grounds for redress, regardless whether flags were flown or sound signals made). This changes RRS 62.
- 17.0 Engine Placement while Racing.** From the time the boat sails near the racing area prior to *racing*, and while *racing*, and until *finishes*, transom mounted engines will be stowed aboard or left mounted with the shaft in the vertical position.
- 18.0 Prizes**
- 18.1 Trophy prizes will be awarded for each Series and Cup Race as follows:
 - 18.1.1 For 3 or more boats, 1st, 2nd & 3rd place trophy prizes will be awarded.
 - 18.1.2 For less than 3 boats, only 1st place trophy prize will be awarded.
 - 18.2 Hulings Around Madeline Island race and the Dobson Regatta are perpetual trophies, with the winner’s name to be added to these trophies.



18.3 Additional trophy prizes or awards may be awarded at the discretion of the Trophy Chairperson.

19.0 DISCLAIMER OF LIABILITY, WAIVER AND RELEASE

19.1 Sailing is an activity that has an inherent risk of damage and injury, including without limitation bodily injury, personal injury, permanent disability and death. Each person (including without limitation owner, skipper, crew, spectators, officials and others) participates in each race, social event and/or associated activities entirely at his/her own risk. See RRS Rule 4, “Decision to Race”.

19.2 ORGANIZING AUTHORITY, RACE COMMITTEE, PROTEST COMMITTEE, SPONSORS, HOST CLUB AND VENUE (AND EACH OF THEIR RESPECTIVE OFFICERS, DIRECTORS, EMPLOYEES, CONTRACTORS, OFFICIALS, MEMBERS, GUESTS, VOLUNTEERS, REPRESENTATIVES AND ALL OTHER PERSONS IN THEIR CAPACITY OF ASSISTING A RACE, SOCIAL EVENT AND/OR ASSOCIATED ACTIVITIES) (COLLECTIVELY, “RACE ORGANIZERS”) WILL NOT BE RESPONSIBLE OR LIABLE FOR ANY ACTION, CLAIM OR SUIT (COLLECTIVELY, “CLAIMS”) OR LIABILITY, LOSS, DAMAGE, ACCIDENT OR INJURY WHATSOEVER (INCLUDING BODILY INJURY, PERSONAL INJURY, PERMANENT DISABILITY OR DEATH) (COLLECTIVELY, “DAMAGES”) TO ANY PERSON, PROPERTY OR BOAT WHETHER CAUSED BY, ARISING OR RESULTING FROM THEIR ACT, ERROR, OMISSION OR ALLEGED NEGLIGENCE OR MISCONDUCT, WEATHER OR SEA CONDITIONS, HAZARDS OF ANY KIND, DEFECTS OR FAILURE OF BOATS TO BE SEAWORTHY IN HULL, RIGGING OR GEAR, OR ANY ACTS, ERRORS OR OMISSIONS OR ALLEGED NEGLIGENCE OR MISCONDUCT OF RACE ORGANIZERS OR OTHER PARTICIPANTS OR BOATS WHICH MAY OCCUR DURING OR ARISING OUT OF OR IN CONNECTION WITH ANY RACE, REGATTA, EVENT, CRUISE, SPECTACLE, SOCIAL EVENT, RACE FACILITIES OR ANY ACTIVITY SCHEDULED, SPONSORED OR AIDED IN WHOLE OR IN PART BY ANY RACE ORGANIZER(S), TO THE FULLEST EXTENT PERMITTED BY LAW.

19.3 By participating, each participant (and in the case of children and minors, each participant’s parent or guardian) forever waives, discharges and releases any and all **CLAIMS** whatsoever against Race Organizers for any **DAMAGES** to any person, property or boat (i) sustained in conjunction with or prior to, during, or after each race, social event and associated activities; or (ii) arising, relating or resulting from use of race facilities or participation in any race, social event or associated activities, to the fullest extent permitted by law.

19.4 Participant releases all Race Organizers from any Claim on account of giving assistance, aid, care, advice, rescue, first aid, treatment or services.



- 19.5** Owners and skippers of all participating boats are required to inform all crewmembers of this Disclaimer of Liability and Release as a Condition of Entry.
- 20.0 Insurance.** All boats must maintain third-party liability insurance in full force and effect during Racing which will include a general liability policy written by a reputable insurance company insuring the owner and any operators against liability for bodily injury in limits of not less than \$300,000 and for property damage of not less than \$100,000. Each boat will present proof of insurance upon OA's request .
- 21.0 PUBLICITY AND PHOTOGRAPHER'S RIGHTS.** As a condition of participation, each participant (on behalf of him/herself and their children and minors) grants Organizing Authority, sponsors and their designated photographers the perpetual, irrevocable right, license and permission to use, publish and distribute the participant's name, photos, video, images and statements of them and their boat and crew in all forms and media worldwide (including without limitation Internet) for any purposes whatsoever (including without limitation advertising, promotions, sales of pictures, etc.) without compensation or further permission.
- 22.0 Organizing Authority & Host Club.** Organizing Authority (OA) and host club is Apostle Island Station of Wayzata Yacht Club.



Illustration A

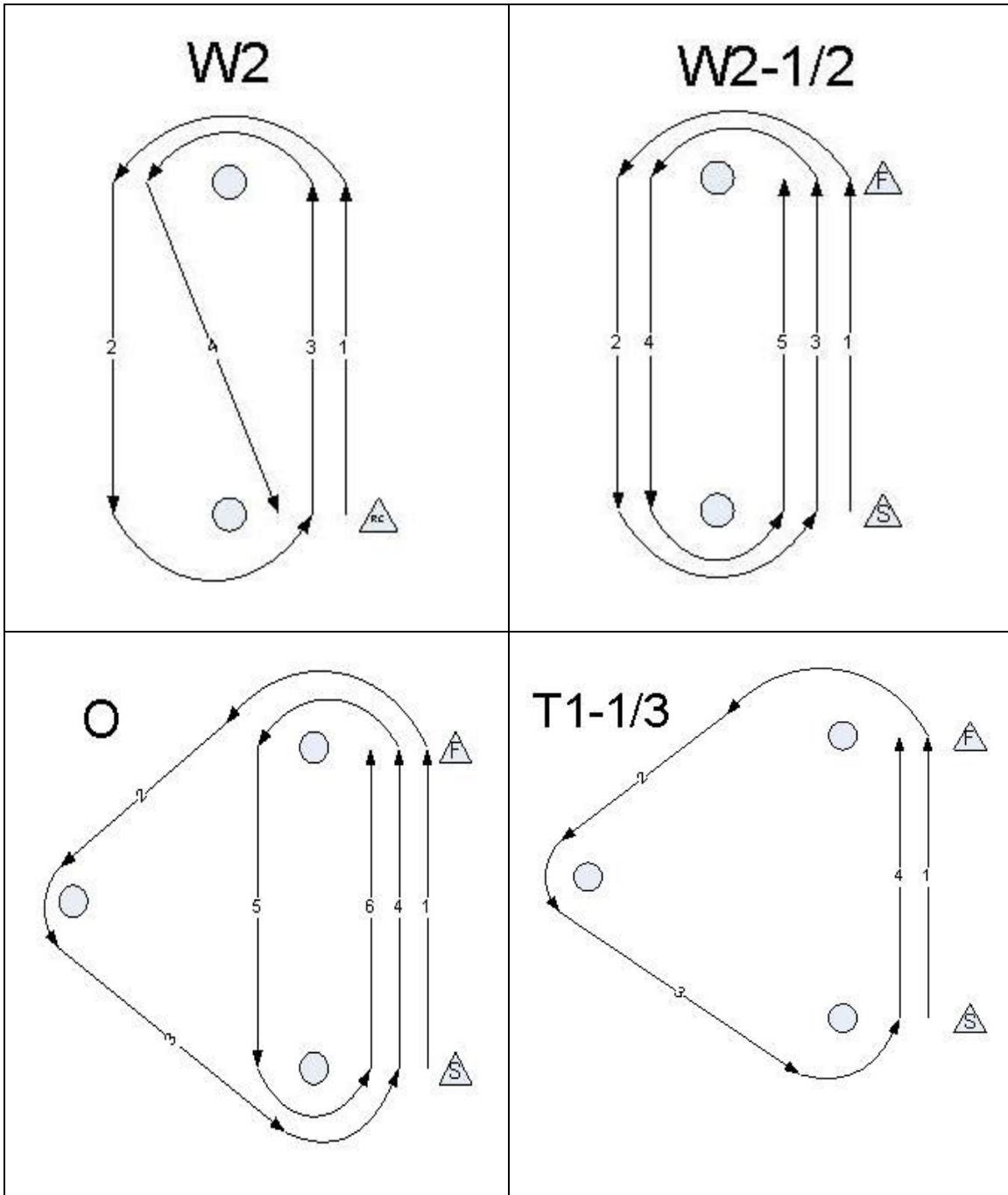
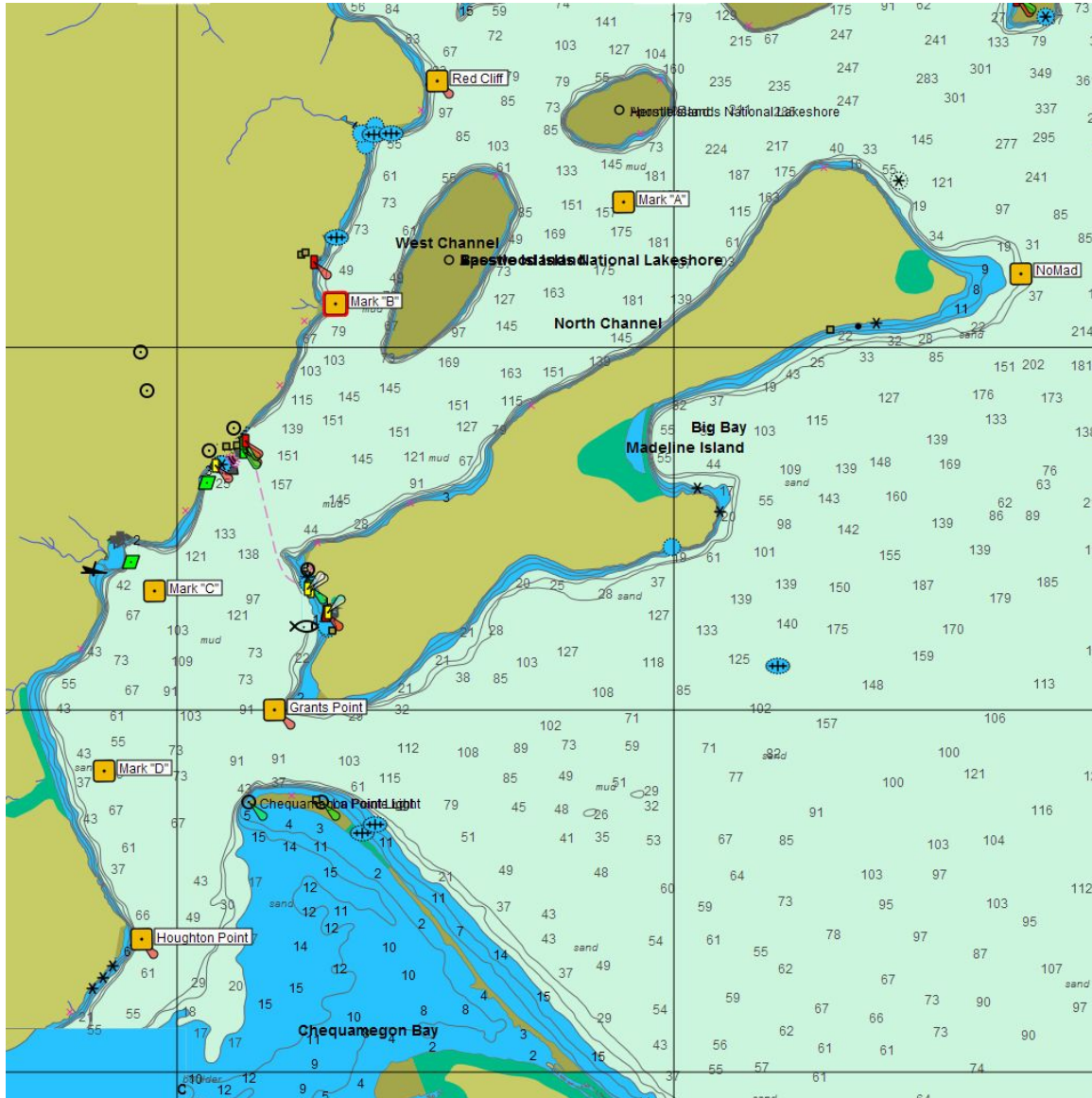




Illustration B



NOTE: Marks A, B, C & D locations are approximate -
“Nomad” is located at N46 51; W90 33.